

iPar7 Installation Instructions: Ez-Go Electric (*Lead Acid)

1. Drill Entry Hole for Power Cord

- Use a size **5/16"** Drill bit
- Drill 5/16" entry hole on inside of frame on drivers side, approximately (5") five inches below the bottom of the cart roof

*Distance may vary.
Do Not mount where iPar makes contact with the cart roof.

- **Drill hole 1/4" Left of Center**



**Drilling left of center allows the bracket to be mounted with the semi-circle opening at the bottom covering half the hole, allowing the power cord to move freely.*

2. Install iPar Power Cord

Fish the Power Cord :

- Hold excess chain and cord above hole height
- Insert small sections, (2-3") two to three inches of chain at a time, until all the chain is inside frame



- Insert power cord into hole until chain is visible at bottom of frame

*If chain doesn't appear from bottom of frame, pull back and jiggle chain as it's reinserted



- Gently Pull chain until (4-6") four to six inches of the power cord is through the exit opening
- Pull Power Cord until there is approximately 2-3' of cord left at the plug end

**Hold the plug-end length of cord level, or above the entry hole when pulling from the bottom. This helps reduce damage to the cord that may result in grounding issues when connected to power



*There are 2 white dots on the power cord. This mark indicates the minimum amount of cord length to leave outside the frame (a little longer is ok but shorter will not reach the power input on the unit)



3. Install the iPar Mounting Bracket

- Using a 1/4" Driver-Insert included Self Tapping Screws
****Do Not Overtighten****
- Insert screw in top of bracket first



- Press down on the topside of the bracket to keep the base flush with the frame when inserting the bottom screw



- Insert power cord end into outside bracket hole to prevent length from being pulled down the frame when locating power cord in next step



4. Locate Power Cord to Cart Power

- Remove Chain: cut power cord 1-2" from end of exposed strands on chain
- Push power cord end between the cart frame and underbody next to where power cord exits the frame
- Drape over center beam
- Pull cord taught while tucking behind frame corner
- Power Cord will "hide" behind frame

***CAUTION: Do Not pull power cord length from plug end at mounting bracket**



- Run power cord along underbody of cart



Some Ez-Go models have openings in the frame going down the drivers side that accommodate running the power cord down the side instead of the middle

- Pull the power cord into the battery compartment

- Secure the power cord to the frame



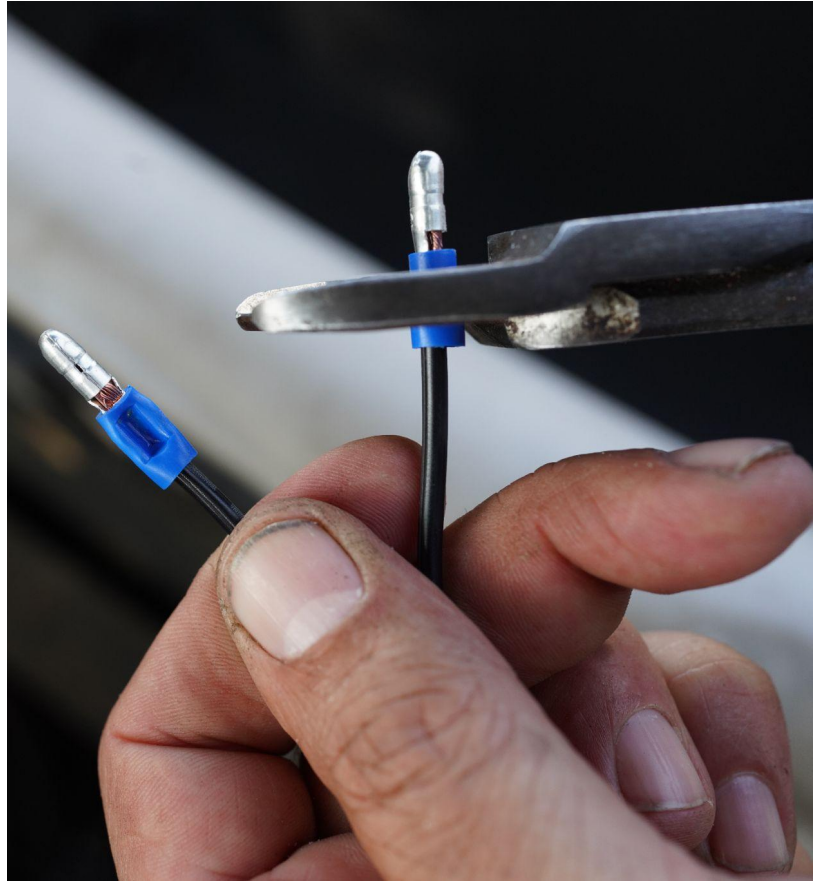
- Remove approximately one inch (1") of coating from each wire of the iPar power cord



- Twist and fold the exposed wire in half



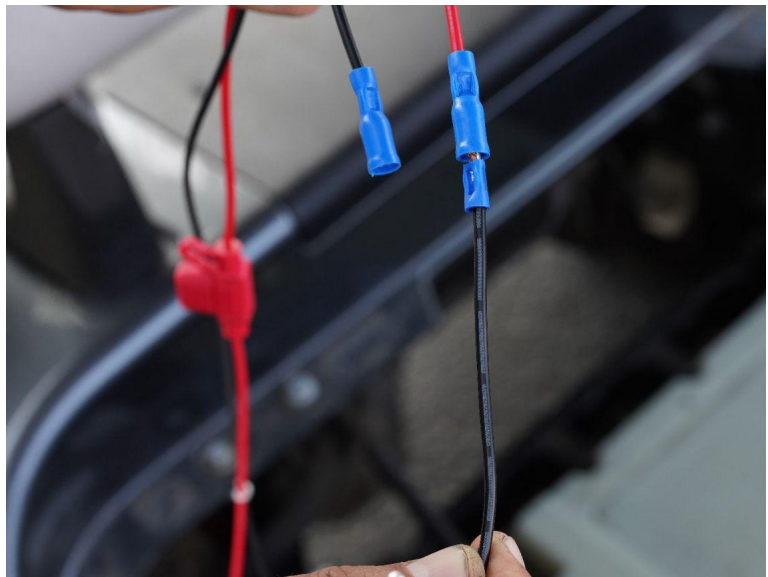
- Crimp blue bullet terminals on each wire



- Connect the Wiring Harness and Fuse holder to the iPar Power Cord

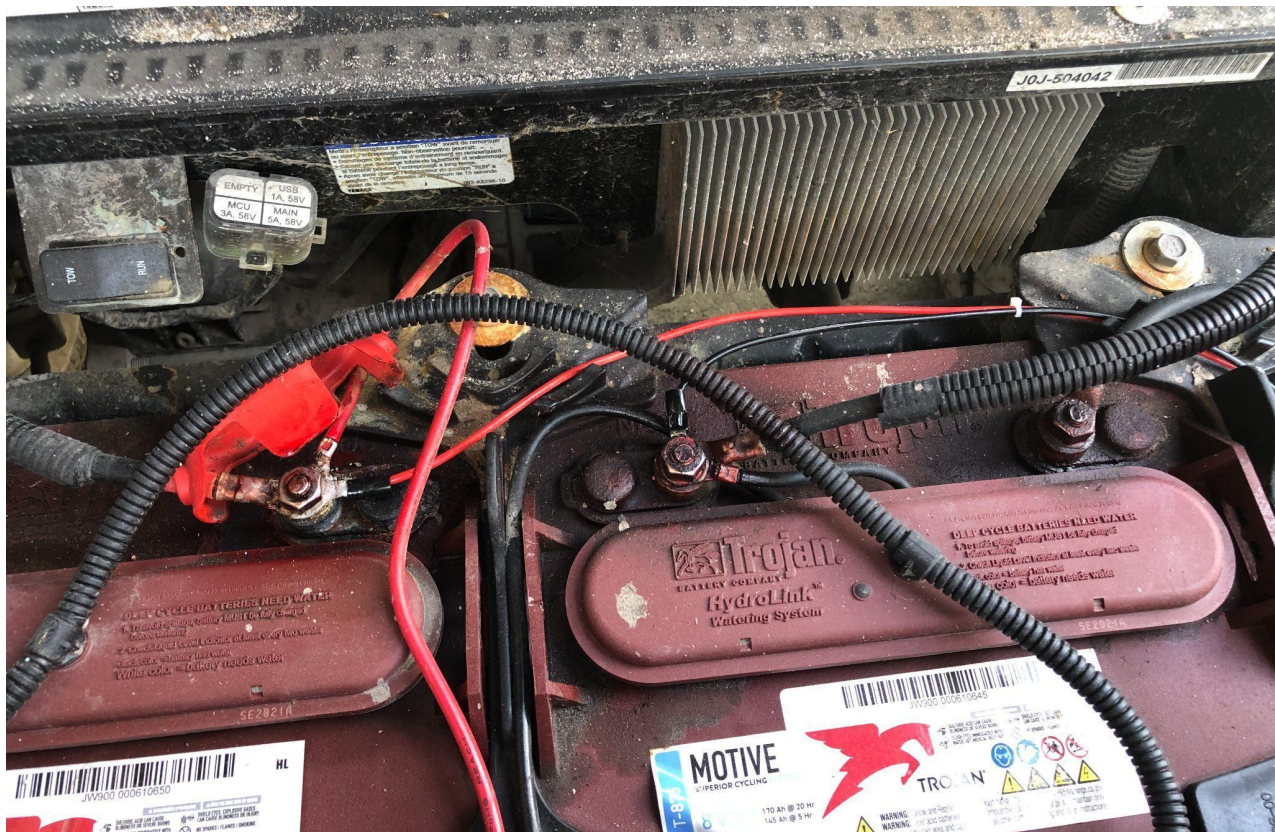
***The iPar Power Cord wire with the White Stripped Line is the POSITIVE WIRE**

- Connect the iPar Power Cord Wire with **White DOTTED LINE** to the **RED (Positive) wire** from the iPar Wire Harness & Fuse Holder
- Connect **Black** iPar Power cord wire with **BLACK (Ground)** wire from the iPar Wire Harness & Fuse Holder



5. Connect iPar Wire Harness to Cart Power Source

- Loosen nuts on battery terminals for with the Main Positive (**Red**) and Negative (**Black**) cables
- Insert C-terminals from **Red & Black** wires on iPar Wiring Harness to corresponding **Red** (Positive) & **Black** (Negative) Main Battery terminal posts (these will have the primary power cables for the cart's electrical system attached)
- Tighten nuts on battery terminal posts



6. Connect iPar7 to Mounting Bracket

- Cordless drills may strip out threaded screw inserts. Use a screwdriver or set brake very low to prevent damage to the unit



7. Activate iPar7

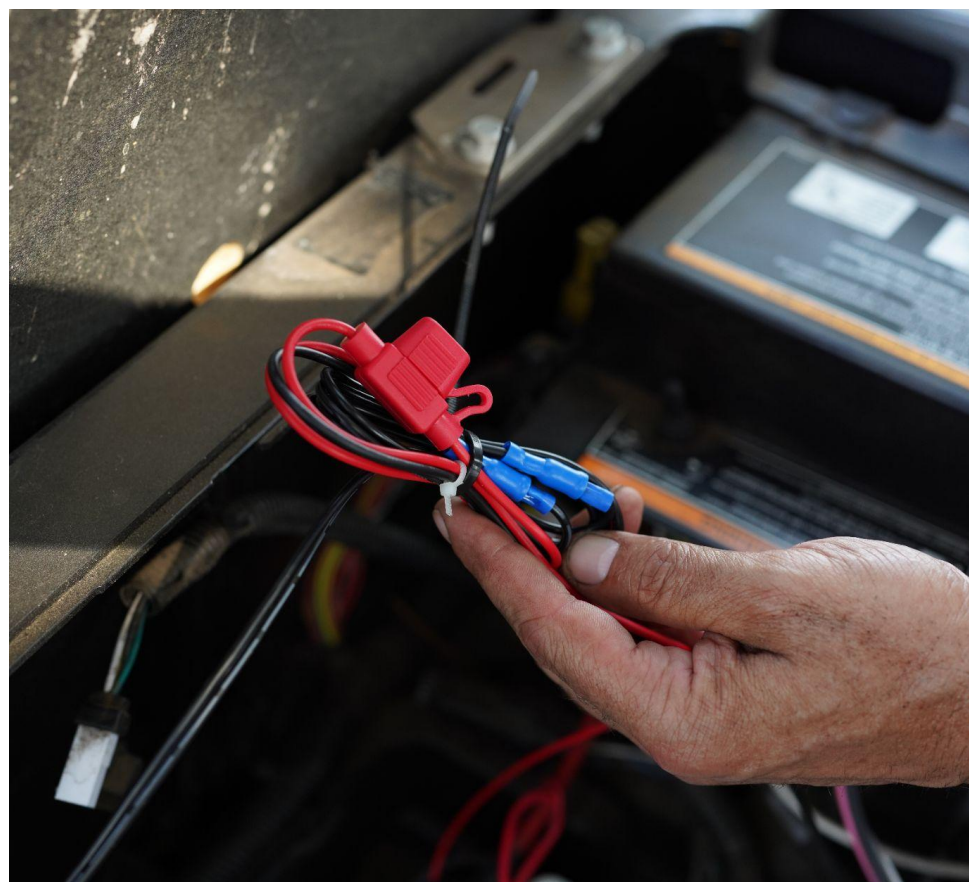
- Insert iPar power plug and gently tap the lower right hand corner of the unit

* iPar7 will show the logo screen and start looking for satellites. Once it acquires or "locks in" a "Ready, proceed to tee" message will appear



8. Secure iPar Wire Harness & Excess Power Cord

- Bundle and zip-tie the iPar wire harness and extra power cord length to an accessible location near the cart power source



Reinstall Seat

Program Cart Number

On iPar7 homescreen:

- Press Menu (lower left corner)
- Press Management
- Enter 999
- Press OK
- Press Cart # 998
- Enter Cart #
- Press Accept
- Press OK