

iPar7 Installation Instructions: Yamaha Electric

1. Drill Entry Hold for Power Cord

- Use a size **5/16"** Drill bit
- Drill 5/16" entry hole on inside of the frame on the drivers side, approximately (5") five inches below the bottom of the cart roof
 - *Distance may vary. **Do Not** mount where iPar makes contact with the cart roof.
 - **Attach iPar to mounting bracket and confirm power cord hole location prior to drilling



- Drill hole $\frac{1}{4}$ " Left of Center

**Drilling left of center allows the bracket to be mounted with the semi-circle opening at the bottom covering half the hole, allowing the wire to move freely.*

2. **Drill Exit Hole for Power Cord**

- Measure 3" from the top of the frame cover
- Mark distance with a pencil on the side facing the driver
- Use a 1/2" Drill Bit
- *Drill center of 1/2" hole AT or just ABOVE 3" mark

*Roof frame sits on posts. Top of post is 2"-
2 1/2" from top of frame cover

DO NOT Drill below 2 1/2" from top of frame cover



3. **Install iPar Power Cord**

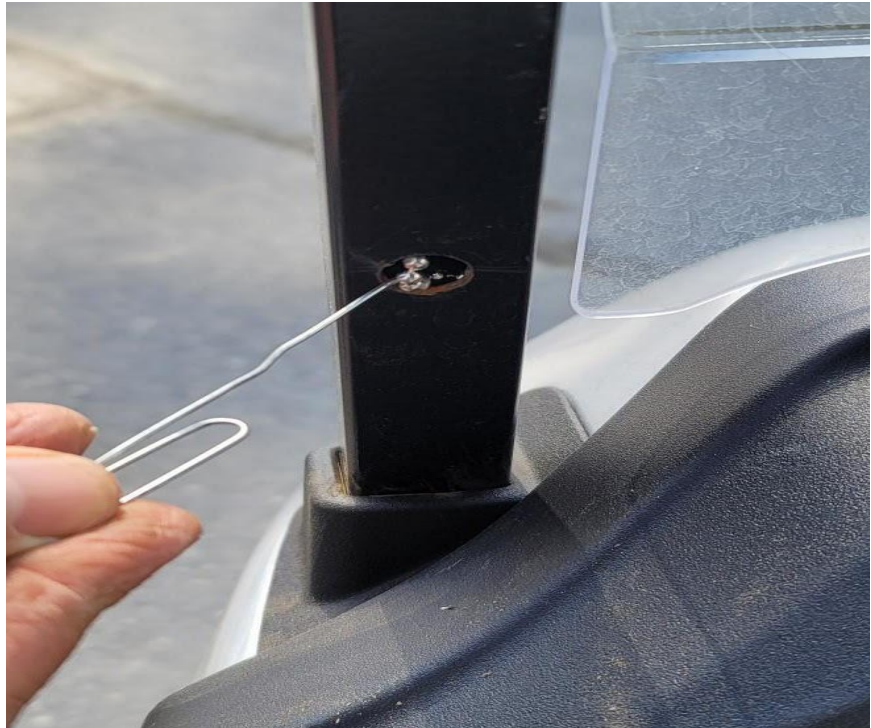
Fish the Power Cord :

- Hold excess chain and cord above hole height
- Insert small sections, (2-3") two to three inches of chain at a time, until all the chain is inside frame
- Insert power cord into hole until chain is visible at bottom of frame



- Using a paper clip, fashion a hook to “fish” or pull chain out of exit hole

*If chain is bundled at bottom, pull back some length from entry hole



- Gently Pull chain until (4-6”) four to six inches of the power cord is through the exit opening



*Hold the plug-end length of cord level, or above the entry hole when pulling from the bottom. This helps reduce damage to the cord that may result in grounding issues when connected to power

- Pull power cord through exit hole
- Leave approximately four inches (4") of cord behind the plug



There is a white mark on the power cord four (4") from the plug. This mark indicates how much cord length to leave outside the frame (a little longer is ok but shorter isn't)



4. Install the iPar Mounting Bracket

- Using a 1/4" Driver-Insert Self Tapping Screws ****Do Not Overtighten****
- Insert screw in top of bracket first
- Press down on the topside of the bracket to keep the base flush with the frame when inserting the bottom screw
- Insert power cord end into outside bracket hole to prevent length from being pulled down the frame when locating power cord in next step



5. Locate Power Cord to Cart Power

- Remove Chain: cut power cord 1-2" from end of exposed strands on chain
- Install rubber bushing for power cord exit hole
- Push power cord end through the frame cover on the same side as exit hole
- Pull power cord length through frame cover



- Remove any twist from power cord so it lays flat against the frame
- Pull power cord taught from underneath cart body

***CAUTION: Do Not pull power cord length from plug end at mounting bracket, down the frame**



- Drill a 5/16" hole in the underbody channel directly behind the driver's side front wheel





- Pass the power cord through the 5/16" hole

- Run power cord along underbody of cart



- Bring power cord thru cart underbody next to vent hose in the battery compartment under the seat

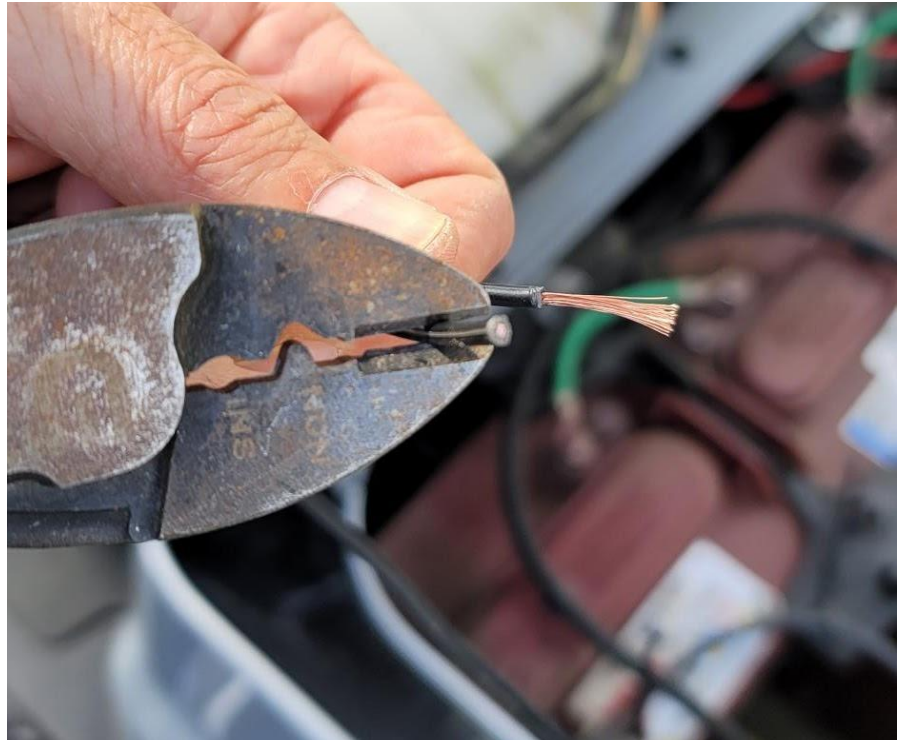


- Zip tie power cord to cart frame next to vent hose



6. Connect Terminals on Power Cord

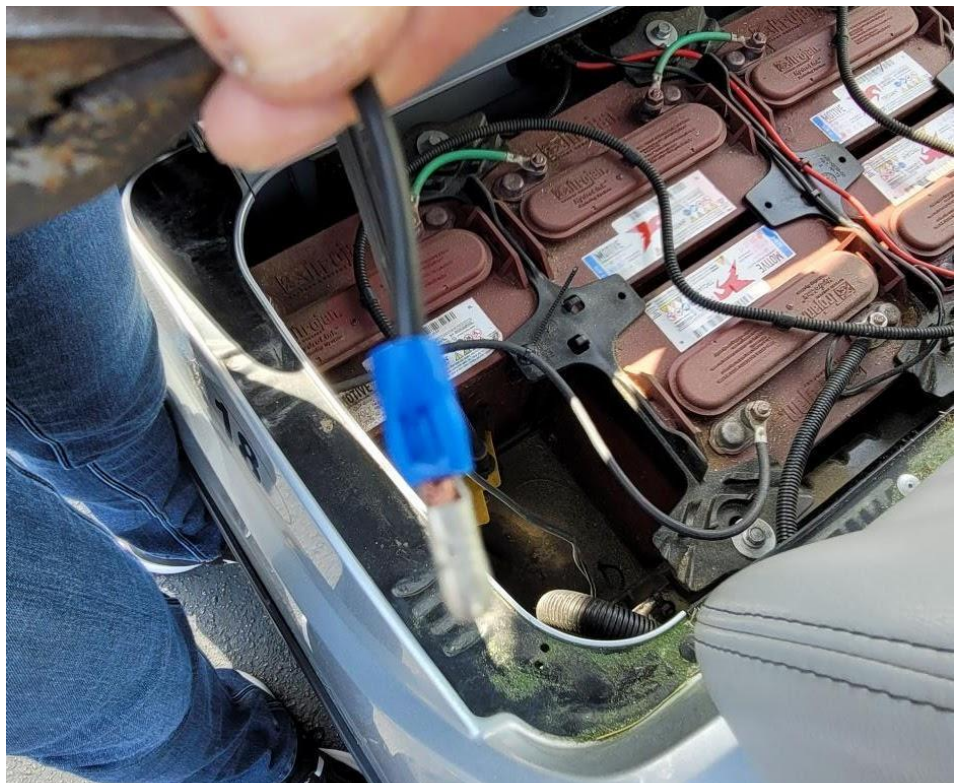
- Remove approximately (1") one inch of coating from each wire of the iPar power cord



- Twist the exposed wire and fold in half

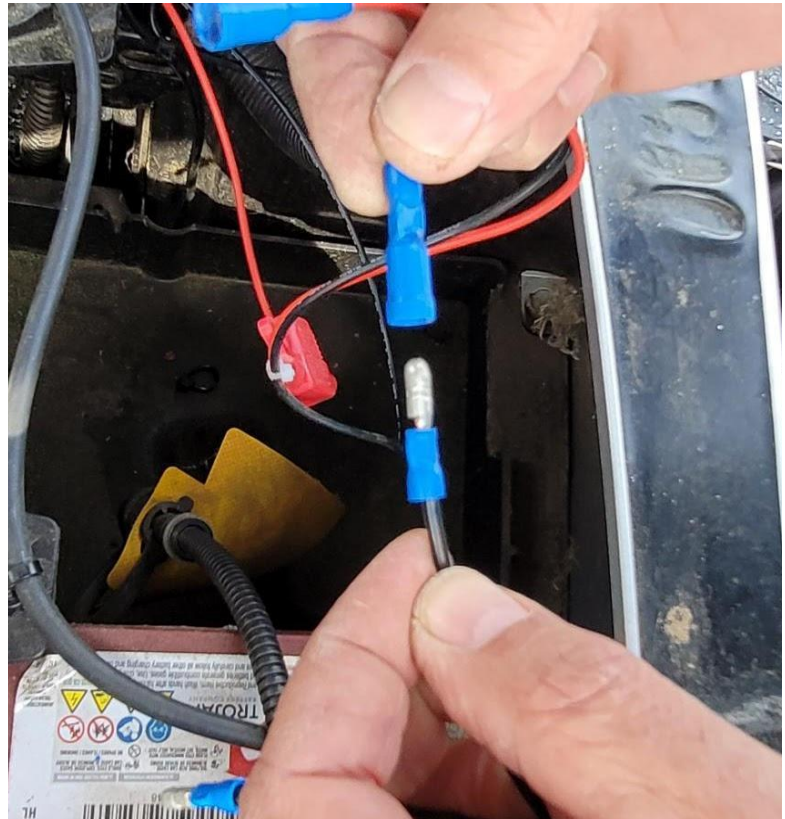


- Crimp male bullet terminals onto power cord



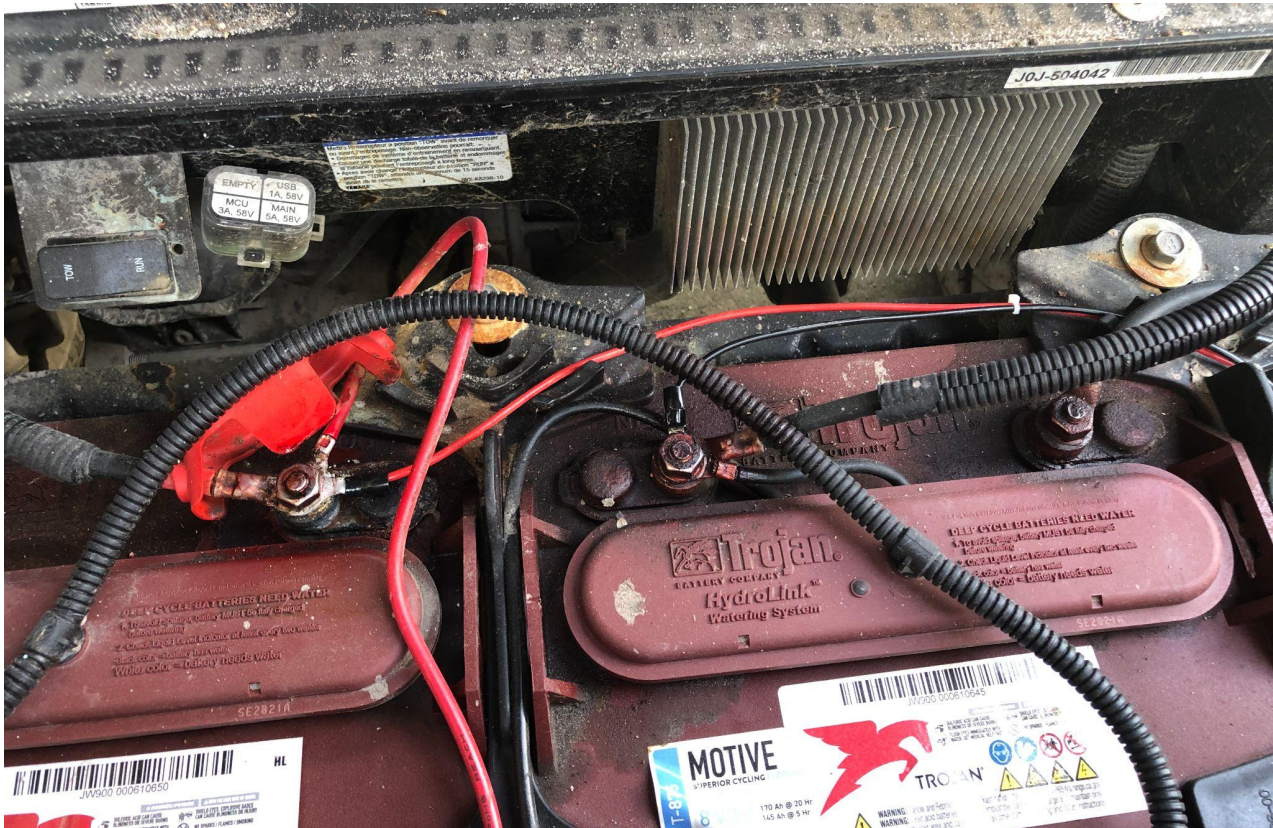
*The iPar Power Cord wire with the **White Stripped Line** is the **POSITIVE WIRE**

- Connect iPar Wire Harness & Fuse Holder to iPar Power Cord
 - a. Connect the iPar Power Cord Wire with **White DOTTED LINE** to the **RED (Positive) wire** from the iPar Wire Harness & Fuse Holder
 - b. Connect **Black** iPar Power cord wire with **BLACK (Ground)** wire from the iPar Wire Harness & Fuse Holder



7. Connect iPar Wire Harness to Cart Power Source

- Loosen nuts on battery terminals for main Positive (**Red**) and Negative (**Black**) cables
- Insert C-terminals from **Red & Black** wires on iPar wiring harness to corresponding **Red** (Positive) & **Black** (Negative) Battery terminal posts
- Tighten nuts on battery terminal posts



8. **Connect iPar7 to Mounting Bracket**

- **Use a Screwdriver**
Cordless drills may strip out threaded screw inserts



9. **Activate iPar7**

Insert iPar power plug and gently tap the lower right hand corner of the unit

* iPar7 will show the logo screen and start looking for satellites. Once it acquires or "locks in" a "Ready, proceed to tee" message will appear



10. Secure iPar Wire Harness & Excess Power Cord

- Bundle and zip-tie the iPar wire harness and extra power cord length an accessible location near the cart power source



to

11. Reinstall Seat

12. Program Cart Number

On iPar7 homescreen:

- Press Menu (lower left corner)
- Press Management
- Enter 999
- Press OK
- Press Cart # 998
- Enter Cart #
- Press Accept
- Press OK